

STEFANIE H.
WEILL
C E N T E R

FOR THE PERFORMING ARTS

Technical Information

Updated March 2022



TABLE OF CONTENTS

(Ctrl+click to go to specific section)

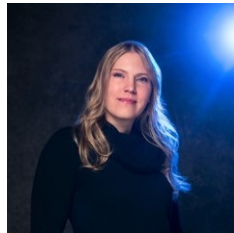
Contacts and Policies.....	2
Directions and Parking.....	3
Loading Dock.....	4
Stage.....	5
House Information.....	6
Production.....	7
Rigging.....	8-9
Power and Lighting.....	10-11
Sound.....	12-14
Projection and Concert Equipment.....	15
Wardrobe.....	16
Risers.....	17
Miscellaneous and Facility Equipment.....	18
Available Rental Equipment.....	19-20

MANAGEMENT CONTACT



Katy Glodosky
Executive Director
kglodosky@weillcenter.com
(920) 208-0808 x 106

TECHNICAL CONTACT



Tracey Cook
Production Coordinator
tcook@weillcenter.com
(612) 889-0952

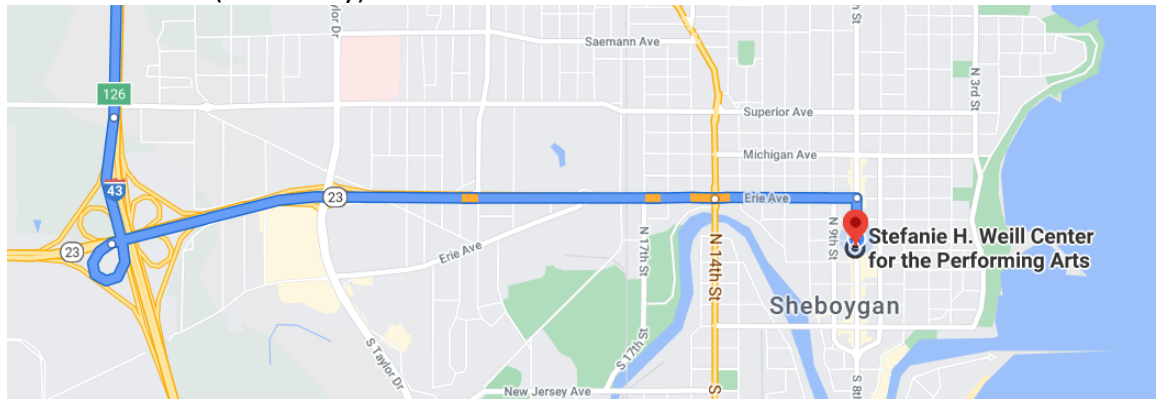
POLICIES

- No smoking anywhere in the theatre.
- No eating or drinking in the control booths or positions.
- **ABSOLUTELY NO DRILLING OR SCREWING INTO THE STAGE FLOOR**
- The company will be responsible for the replacement or repair of any damages that their staff may create to the equipment or the facility.
- No use of fog or haze without permission.
- No person shall be allowed on the MOVING apron. Only once apron is in place and secured at stage, audience, or orchestra level will access be allowed!
- Masks and/or face coverings must be worn at all times in the theater, covering both the nose and mouth (with exception of during the performance).
- Prepare to social distance; Keep 6 feet apart from others.
- Do not enter the theater if you feel ill.

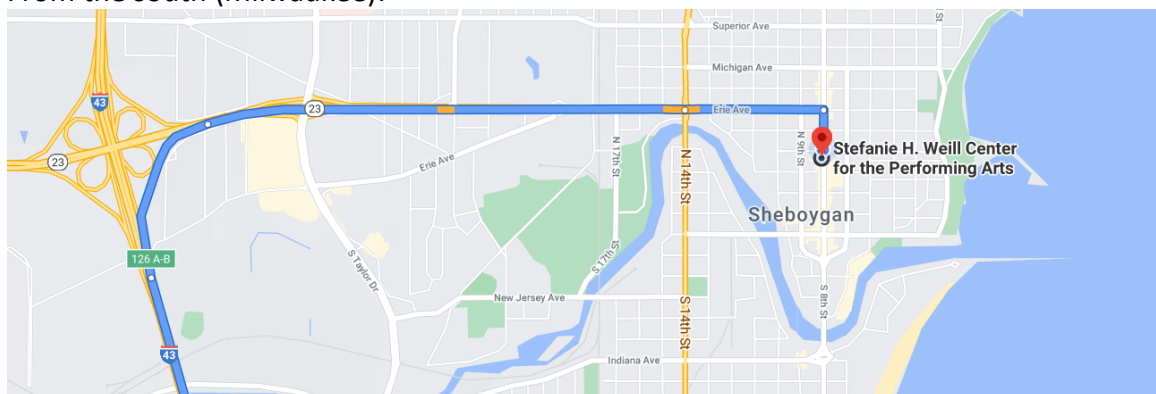
DIRECTIONS - Weill Center, 826 N 8th Street, Sheboygan, WI 53081

Sheboygan is located halfway between Milwaukee and Green Bay on Interstate 43. Take Exit 126 (Highway 23 East) into Sheboygan. Keep straight. Highway 23 will turn into Kohler Memorial Dr. and then into Erie Ave. Stay on Erie Ave. until you reach 8th St., turn right/south onto 8th St. and proceed 2 blocks. You will see the Sheboygan marquee on the right (west) side of the street.

From the north (Green Bay):



From the south (Milwaukee):



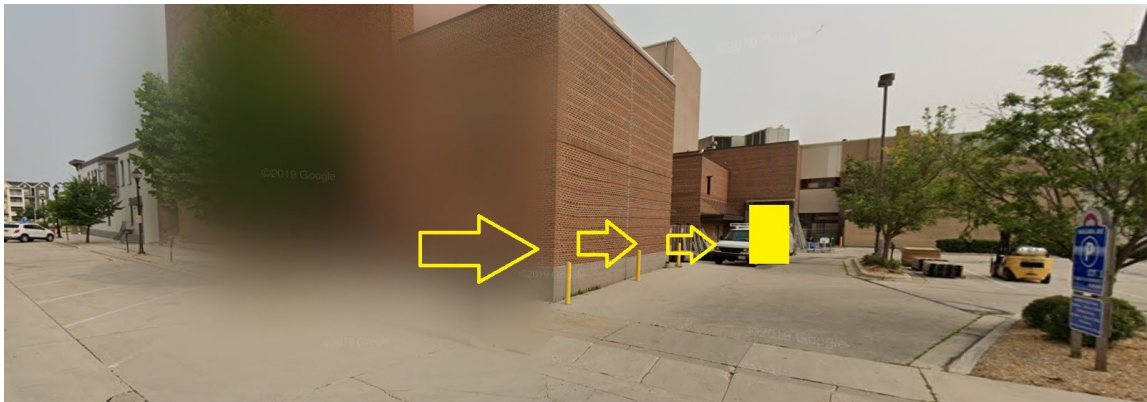
PARKING

There is metered parking (7am – 5pm) on all streets surrounding the theatre. Nights (after 5 p.m.) and weekends (Saturday and Sunday) parking is free. There are reserved parking spaces in the parking lot on the corner of 9th and Niagara St., which is to the rear of the theatre. The loading dock is located in the same parking lot. Additional (free) street parking is located between 7th and 8th St. on Niagara Ave.

Street / parking lot can be reserved for buses and semis if requested with venue in advance.

LOADING DOCK

The loading dock is located directly behind the building on 9th and Niagara Avenue.

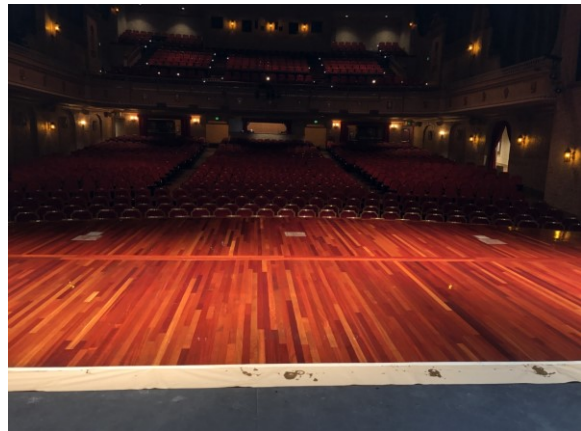
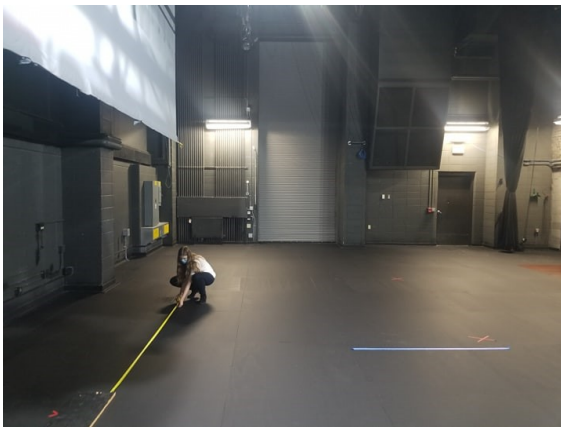


Loading dock is at dock height. There is only a single bay door (10' h x 8' w) with hydraulic dock leveler. Dock is located at stage height just off stage left. The dock is wedge shaped and currently houses Acoustical towers, scissor lift, drape hampers and Apron stairs. This leaves minimal space for equipment storage.

Shore power (30 amp & 50 amp) for buses is located off of loading dock.

NOTE: parking in the dock during performances must be communicated during advance. (The loading zone contains Emergency Doors for House Right.)

STAGE SPECIFICATIONS



Proscenium	Height27'6"
	Trim.....30'
	Width.....40'
Stage size	PL to back wall.....37'0"
	PL to DS edge.....2'3"
Wing space	SL.....14'x29'
	SR.....6'x26'
	US crossover.....3'0"
Crossover may also occur via basement corridor	
Orchestra pit/ Apron	Max. Length.....43'3"
	Max. Width.....11'7"
	Stage to Audience..... 3'2"
	Full Depth..... 11'0"
*ORCHESTRA PIT IS MOVABLE	

FLOOR

Deck in sprung deck Apron and first 10' of DS is Cherry tongue and groove. US is black painted plywood.

NOTE: *NO drilling or screwing into deck anywhere!*

HOUSE INFORMATION

Total Permanent Seats: 1151

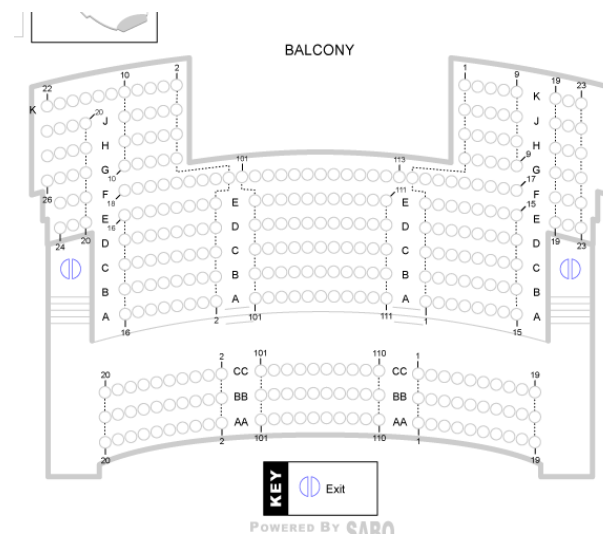
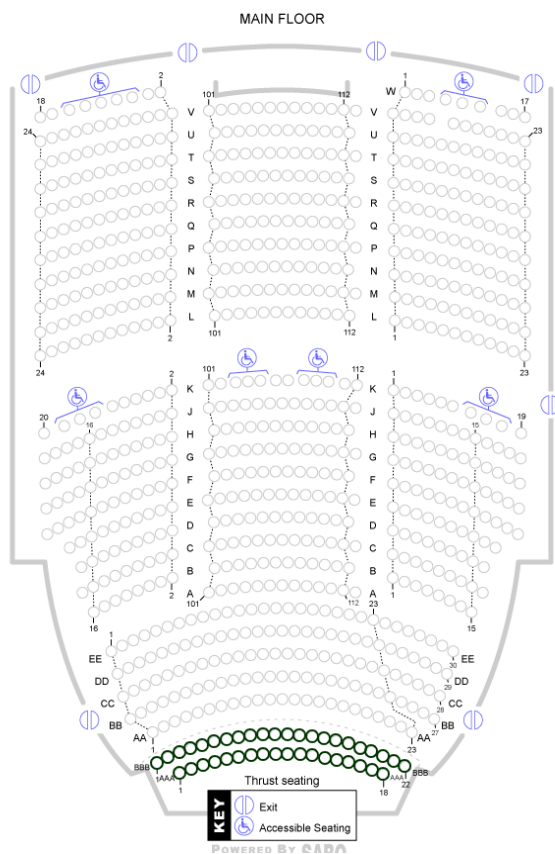
Main Floor: 813

Balcony: 338

Temporary seating on thrust: 40

*Handicap accessibility to stage is made via House lobby.

*The theater is equipped with infrared system for the hearing impaired.



PRODUCTION

Production Office available on the 2nd floor. A separate Green Room is available.

*No Rehearsal Rooms available

The Center is a non-union house. Crews are predominately community based trained volunteers. IA hands can be brought in. A separate break room can be made available upon request.

Green Room is located off stage right. It is equipped with a page/ audio monitor, microwave, sink, and refrigerator. Green Room is supplied with internet connection (phone jack or wireless). Restrooms are located across the hall.

GREEN ROOM



GREEN ROOM
AMENITIES



RIGGING

Line Set Data:

Grid Height.....55'6"
High Trim (empty batten).....54'7"
Low Trim (empty batten).....4'7"
High Trim (electrics).....30'4"
Low Trim (electrics).....2'4"
Total Line Sets.....38 (see Line Schedule)
single purchase counterweight system
Arbor Capacity.....(see Line Schedule)
Weight size.....18 lb.
Pipe Length.....52' (first 3 lines are 49')
Pipe Size.....2" OD Schedule 40 pipe

Forklift is available by request

Rigging off the grid with chain motor is acceptable (fire curtain must remain uninhibited)

No Rigging points exist downstage of the proscenium.

House Drape:

ITEM	#	MATERIAL	W x H
Act Curtain	1	Regal Red, w/ fullness	48' x 30'
Teaser	1 pair	Regal Red, w/ fullness	48' x 10'
Soft Tormentor	2	Regal Red, w/ fullness	11'6" x 30'
Olio Curtain	1	Gold, with fullness	52' x 32'
Legs	3 pairs	Black velour	8' x 30'
Borders	3	Black velour	50' x 8'
Black Traveler	2	Black velour	50' x 30'
Scrim, black	1	Sharkstooth	52' x 29'
Cyclorama, light blue	2	Seamless muslin	50' x 34'

Legs and borders may be moved provided they are returned to original location

Electrics and travelers are in a PERMANENT position

Scrim and Cycs can be moved with permission

WEILL CENTER LINE SET SCHEDULE						
DISTANCE FROM PLASTER LINE	LINE SET #	ASSIGNED LINES	MATERIAL WEIGHT	ARBOR WEIGHT	NOTES	PERMENANT
1'-3"	1	ACT CURTAIN		1287 LBS	GUILLotine	YES
2"-6"	2	PROJECTION SCREEN		1287 LBS		
3'-0"	3	TEASER		1287 LBS	RED	YES
3'-6"	4	TORMENTOR LEGS		1287 LBS	RED WITH TRAVEL	YES
4'-5"	5	1ST ELECTRIC		2360 LBS		YES
5'-10"	6	2ND ELECTRIC		2360 LBS	BORDER LIGHTS	YES
6'-8"	7			1287 LBS		
7'-6"	8	OLIO		1287 LBS	GOLD	YES
8'-1"	9			1287 LBS		
10'-0"	10	MOVIE SCREEN		1287 LBS	WITH TRAVELER	YES
10"-8"	11	BORDER		1287 LBS		
11'-6"	12	LEGS		1287 LBS		
12'-0"	13	DS ORCHESTRA SHELL		2574 LBS		YES
13'-6"	14	3RD ELECTRIC		1931 LBS		YES
14'-3"	15			1287 LBS		
14'-11"	16			1287 LBS		
15'-6"	17			1287 LBS		
16'-4"	18			1287 LBS		
16'-10"	19	MID-STAGE TRAVELER		1287 LBS		YES
18'-2"	20	BORDER		1287 LBS		
18'-10"	21	LEGS		1287 LBS		
19'-10"	22			1287 LBS		
20'-9"	23	4TH ELECTRIC		1931 LBS		
22'-3"	24			1287 LBS		
23'-0"	25	US ORCHESTRA SHELL		2574 LBS		YES
23'-4"	26	BORDER		1287 LBS		
24"-3"	27			1287 LBS		
24'-11"	28			1287 LBS		
26'-4"	29	REAR TRAVELER		1287 LBS		YES
26'-10"	30			1287 LBS		
28'-3"	31	5TH ELECTRIC		1931 LBS	CYC LIGHTS	YES
29'-6"	32	6TH ELECTRIC		1931 LBS	BORDER LIGHTS	YES
30'-11"	33	LEGS		1287 LBS		
31'-6"	34			1287 LBS		
31'-10"	35			1287 LBS		
32'-4"	36	BLACK SCRIM		1287 LBS		
32'-11"	37	BLUE CYC (NEW)		1287 LBS		YES
33'-6"	38	BLUE CYC (OLD)		1287 LBS		YES

SHOW POWER

400 amp, 3 phase, 5 wire, 120/208v	USL
200 amp, 3 phase, 5 wire, 120/208v	USL
100 amp, 3 phase, 5 wire, 120/208v	DSL (sound isolated)

LIGHTING

Dimmers:

ETC Sensors 20a. / 2.4 k
209 available stage circuits
80 House, Lobby and Architecture lighting

Control:

ETC Ion Xe 20 console with 2048 outputs
ETC Ion ETC 2x20 fader wing
Wireless remote focus available

Backup lighting consoles:

ETC Express 48/96	400 channels, 600 cues
ETC Express 24/48	400 channels, 600 cues
ETC Expression 3	400 channels, 600 cues

* Remote Focus Unit available*

Control Location:

Primary position is at back of house. There is a secondary location on the stage right loft.

Circuit Positions

1-26	1 st Electric	165-174	HL Box Boom
27-44	2 nd Electric (Borderlight)	175-179	Proscenium down light
45-62	3 rd Electric	180-181	Stage & Apron Edge light
63-80	4 th Electric	182-184	HR & HL Balcony Boom
81-98	5 th Electric	189-194	SR Torm
99-116	6 th Electric (Borderlight)	195-200	SL Torm
117-128	HR Beam position	201-208	SR Floor pockets & drop boxes
129-140	HL Beam position	209-216	SL Floor pockets & drop boxes
141-154	Balcony Rail	217-224	US Floor pockets & drop boxes
155-164	HR Box Boom	225-228	Apron Floor pockets

2nd thru 6th Electrics – circuits on stage left repeat on stage right

Color:

We only stock a limited amount of Roscolux color media

Instruments:

No.	Type	Lamp
4	ETC Source Four 10 deg.	HPL 750
24	ETC Source Four 19 deg. (6x16)	HPL 750
24	ETC Source Four 26 deg. (6x12)	HPL 750
20	ETC Source Four 36 deg. (6x9)	HPL 750
6	ETC Source Four 50 deg. (6x4.5)	HPL 750
11	Martin MAC 250+ moving light fixtures	
30	Elation LED Par (SixPar 200) fixtures	
8	Chauvet Rouge R2X Wash Moving Light 2.8Amp	
32	Source 4WRD Par body with retrofit (Orchestra shell ceiling and proscenium down lights)	
20	Altman Shakespeare 12 deg. (6x22)	HX755 750
18	Altman 6" Fresnel	BTN 750
40	ETC Source Four Par	HPL 750
15	Altman Sky Cyc single cell	FFT 1000
4	Altman 7.5 ft. 3 cir. Strip light	300BR40
2	Lycian 2000 follow spot	MSR 1200
2	44 ft. 4 cir. Border lights	300BR40

Hazer: Diffusion DF-50

*Must go into "EVENT MODE" prior to using haze

Accessories:

- 22 - Gobo holder - size "A" steel
- 20 - donuts 5 1/4"
- 4 - Source 4 gel extenders
- 0 - barndoors
- 0 - tophats
- 0 - booms
- 25 - sidearms

Cable:

- 20 @ 10' stagepin
- 15 @ 15' stagepin
- 10 @ 25' stagepin
- 10 @ 50' stagepin
- 25 stagepin twofers
- 5 stagepin – Edison adapter
- Edison
- 2 @ 10' DMX cable
- 8 @ 25' DMX cable

SOUND

Sound Mix Location:

House system is located at back of house (Location is under the balcony)
Secondary mix position located house right mid aisle row K. Can accommodate 8' by 10' footprint

Mixing Console:

Midus M32R 32X16 audio board

Speakers:

Hanging of tour PA must be discussed with Weill Center prior to arrival of tour

Sub position on orchestra is variable (generally center is best)

Main House Left/Right

NEXO: GEOS1210	Main Line Array	18-9 per side
NEXO: GE051230	Main Line Array	2 - 1 per side
NEXO: RS18	Dual 18" Subwoofer	4-2 per side

Front Fills

NEXO: PS8U	8" 2 Way Speaker	4
NEXO: PS8U-TD-V3	System Controller	1

Under Balcony

JBL: Control 30	10" 3 Way Speaker	3
-----------------	-------------------	---

Backup Subs:

2 – AGAPE 2X15 subwoofers

Amps:

Main House Left/Right

NEXO: NXAMP4X4	Main Line Array	1
NEXO: NXAMP4X1	Main Line Array	1
NEXO: NXAMP4X4	Subwoofers	1

Under Balcony

Crest Audio: CA4	(left! Right)	1
Crest Audio: CAI2	(center)	1

Monitor Amp

Rane: MA 65	(6 separate channels)
-------------	-----------------------

Non-powered wedge speakers:

4 – Yamaha SM 12IV
2 – Yamaha SM 12V

Amps:

EV 2.0 KW (2ch)
Yamaha P4500 (2ch)
Crest CA4 (2ch)

Monitor Amp: RANE MA 65 multi channel amp (6 separate channels)
Under Balcony Amp: RANE MA 65 multi channel amp (Left / Center / Right)

Signal Processors:

BSS: BLU-100 12 in 8 out Main PA DSP
BSS: BLU-BOB2 8 Channel Analog Break-out Box

Playback:

Teac Professional
Stereo and Compact Disk player

Microphones:

8 - Shure SM 58A
8 - Shure SM 57A
3 – Shure MX 391/C
8 – Shure MX 202W/C

Wireless:

4 – ULX-D Mics Beta 58 (Band G50)
2 – ULX-D Belt Backs
2 - DPA – 4088 Overear Omni
Receiver – Shure ULXD 4Q (Band G50)
8 - WL 93 lavalier

Lavalieres and handhelds share frequency channels

Wiring Locations:

US – 3 channels
DSL – 35 channels
DSR – 10 channels
Apron – 12 channels

Cable:

21 – 25' 3 pin XLR

- 1 – 40' 3 pin XLR
- 12 – 50' 3 pin XLR
- 2 – 3' XLR F/F turnaround
- 2 – 3' XLR M/M turnaround
- 1 – 6" XLR M/2F splitter
- 1 – 12" XLR F/3M splitter

- 3 – 8 channel Whirlwind box (ISO or Direct output)
- 5 – 50' cables
- 1 – 16 channel Whirlwind box (ISO or Direct output)
- 2 – 50' cables

- 2 – (3') ¼" phono m/m cable
- 1 – (10') ¼" phono m/m cable
- 1 – (10') ¼" phono – RCA m/m cable

- 2 – 10' Neutrik speaker cable
- 4 – 50' Neutrik speaker cable

Hardware:

- 17 – mic stands
- 10 – booms for stands
- 1 – 6" table top stand

- 4 – Pro Co DB-1 Direct box
- 2 – Stewart Electronics ADB-1 Direct box
- 2 – Pro Co AV-1 A/V interface
- 4 – Pro Co MS-2 Mic splitter
- 2 – Atlas speaker tripod (8' max. height)

PRODUCTION COMMUNICATIONS

2 channel Clear-Com system to all production areas as well as the ticket booth inputs located SL, SR, spot booth, board op booth, and orchestra pit

Channel B is tied into backstage monitor system

Pick up mics for monitors are tied into sound board, sound board must be on to operate monitors

- 6 - Belt packs, single channel
- 11 – single muff headsets

FILM PROJECTION

- 1 – Sanyo PLC-UF15 Multimedia Projector 8000 Lumens
 - 1 - Sanyo PLC-XF 1000 Projector 12,000 Lumens
 - 1 - Optimax Theatre Console 35mm projector model # CV 4500
 - 1 - Dolby Digital Cinema Processor model # CP 650
 - 3 - JBL Professional Full range speaker model # 2446 H
 - 3 - JBL Professional Horn speaker model # 4638 TH
 - 2 - JBL Professional Subwoofer model # 4642 A
 - 15 - JBL Surround Sound speakers
 - 2 - QSC DCA1222 Digital Cinema Amp for Cinema Surround Sound speakers
 - 4 - QSC DCA2422 Digital Cinema Amp for Full Range SR/ SL Speakers and SR / SL Subwoofers
 - 1 - QSC ISA800T Pro Amp
 - 1 - 38' x 18' projection screen 1:1
-

CONCERT EQUIPMENT

Orchestra Shell:

Custom design with complete enclosure
Overhead lighting built into the flown shells

Music:

Wenger Padded Musician Chairs	- 86
Wenger Padded Cello Chairs	- 4
Manhasset Music Stands	- 70
Music Stand Lights	- 66
Wenger Coral Risers	- 12 sections
Conductor Podium	
Pianos	Steinway 9' Concert Grand piano
	Kimball 12 rank Pipe Organ (w/ digital output)

ORCHESTRA SHELL



WARDROBE

Dressing Rooms:

All rooms are located 3 flights up off SR. Dressing rooms can be reached either by stairs SR or by the lobby elevator located HL.

All dressing rooms contain a toilet/s, fully lit mirrors and shower/s.

Lockable lockers

#	style	capacity
2	Star	1
1	Women's Chorus	9 - 15
1	Men's Chorus	6 -10



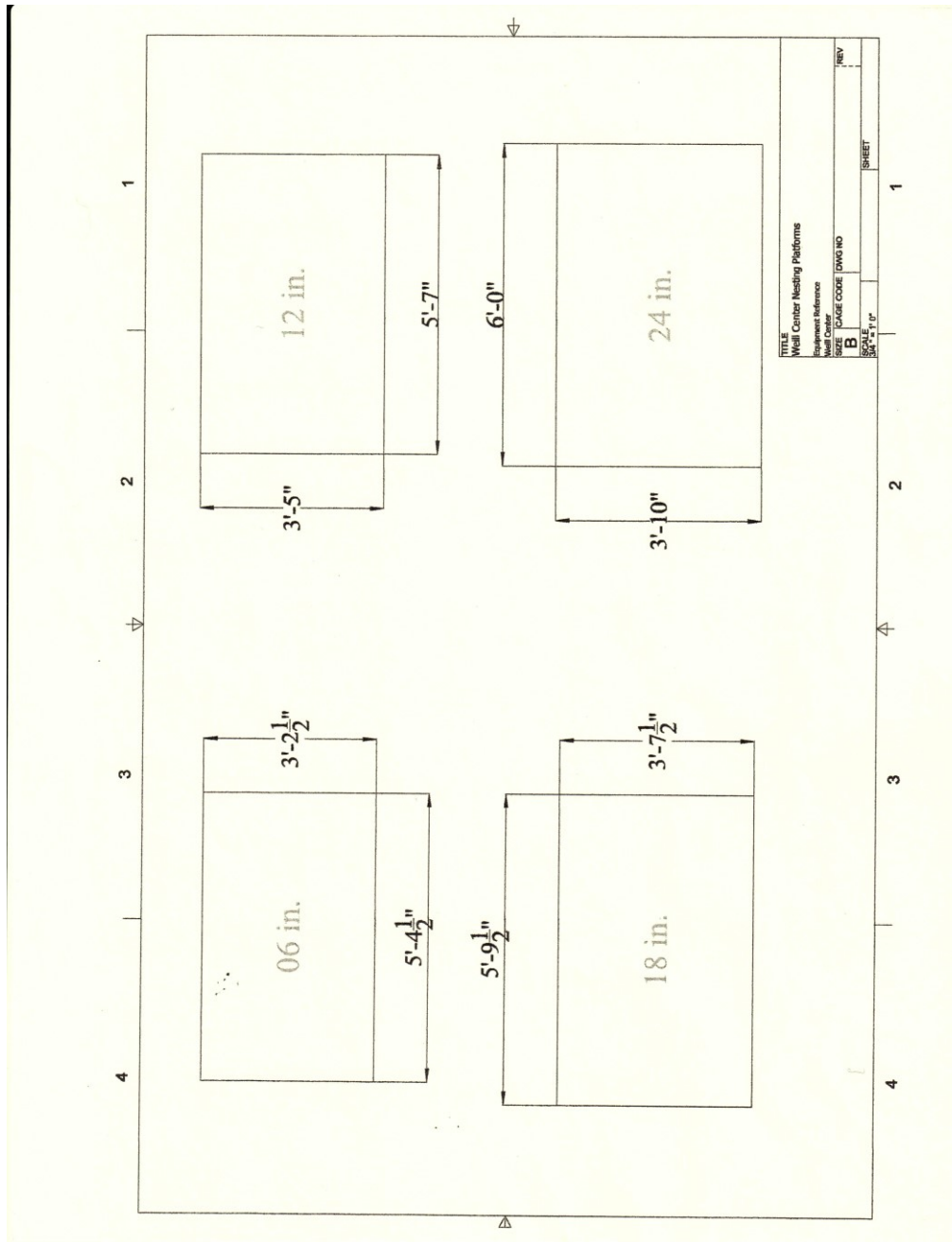
Laundry Room:

Washer	1 - Top loading
Dryer	1 - Front loading
Rolling racks	5 - 6' x 6'
Iron & board	2

RISERS

Nested riser storage system
Risers are custom, not commercially built
24" removable casters

6 - 24 Inch risers	24"H x 3'10"W x 6'L
6 - 18 inch risers	18"H x 3'7 ½"W x 5'9 ½"L
6 - 12 inch risers	12"H x 3'5"W x 5'7"L
6 - 6 inch risers	6"H x 3' 2 ½"W x 5'4 ½"L



MISCELLANEOUS / FACILITY EQUIPMENT

Marley Dance Floor to cover entire stage area from proscenium to upstage wall
(Light Gray)

1 – Podium with light and shock mount microphone attachment

Ladder: 1 - 6' fiberglass

1 - 8' fiberglass

1 - 20' fiberglass extension

Scissor lift: Electric drivable w/ 20' maximum height

Sandbags

4 – 25lb

4 – 50lb

2 – 75lb

5 – 100 lb

2 – 150 lb

RENTAL EQUIPMENT AVAILABLE ON PREMISES

Powered Speakers:

- 3 – QSC K12
- 2 – QSC K8
- 3 – QSC K10.2

Splitter Snakes:

- Whirl Wind 24' CH 25' FOH – 25' MON
- EWI 16 CH 10' FOH – 10' MON

In Ear Monitor:

- 4 – CH SENNHEISER EW 300 G3 Aband

Direct Boxes:

- 1 – BSS ar-133 Mono Active
- 2 – Carvin FDR-60 Mono Passive
- 1 – LR BAGGS Mono Active
- 1 – PROCO DB1 Mono Passive
- 1 – Radial Tonebone Mono Active
- 4 – Radial D1 Mono Passive
- 1 – Radial D2 Stereo Passive
- 2 – Radial – AV2 Stereo Passive
- 2 – Radial – JDX Mono Active amp to board
- 1 – Radial JPC Stereo Active
- 1 – Rapco DB100 Mono Passive
- 3 – Whirlwind EDB1 Mono Passive
- 2 – Whirlwind IMP Mono Passive 1x3 split

Audio Boards:

- 1 – Behringer Xair 12
- 1 – Midas M32
- 1 – Midas M32R
- 2 – Midas M32C/DL32

Microphones:

- 2 – AKG C535
- 2 – Audix D1
- 6 – Audix D2
- 6 – Audix D4
- 1 – Audix D6
- 1 – Audix Snare condenser
- 3 – Audix OM5 Voc/ Inst
- 3 – Audix ADX-51

- 4 – Audix I5
- 1 – Beyer M300
- 1 – DPA 4099
- 1 – Rode NT6
- 3 – Senn 914
- 1 – Senn 421
- 1 – Senn 935
- 1 – Shure Beta 87C
- 2 – Shure Beta 57A
- 1 – Shure Beta 52A
- 1 – Shure Beta 91
- 4 – Shure SM57
- 2 – Shure Beta 181 Bi directional
- 3 – Shure Beta 181C
- 2 – Shure Beta 181 SC
- 3 – Telefunken M80

Multimedia Video Projectors:

- 1 – Sanyo PLC-XP45 Ultra Long Lens
- 3 - Sanyo PLC-XP57 – 2 w/ zoom long lens – 1 w/.8 short lens
- 1 – Sanyo PLC-EF31N standard zoom lens
- 1 – Sanyo PLC-UF15 Standard Zoom Lens
- 1 – Sanyo PLC-XP56 Medium Long Zoom Lens
- 1 – Christie LX37 38-VIV211-01 Standard Zoom Lens
- 1 – Mitsubishi WD8200U Large Venue WXGA DLP Projector – Standard Zoom Lens